

Making healthcare accessible for everyone

Health Support Navigation Service (HSNS) For South-West Sydney's Communities

About HSNS

The HSNS program provides assessments, navigation, case work, capacity building and supplementary cost support to people in South-West Sydney (SWS). The program is funded by the Australian Government through the SWS Primary Health Network (PHN).

The service supports individuals from CALD and refugee populations, and those who are homeless or at risk of homelessness to overcome barriers and challenges to accessing primary healthcare by connecting them with appropriate healthcare services.

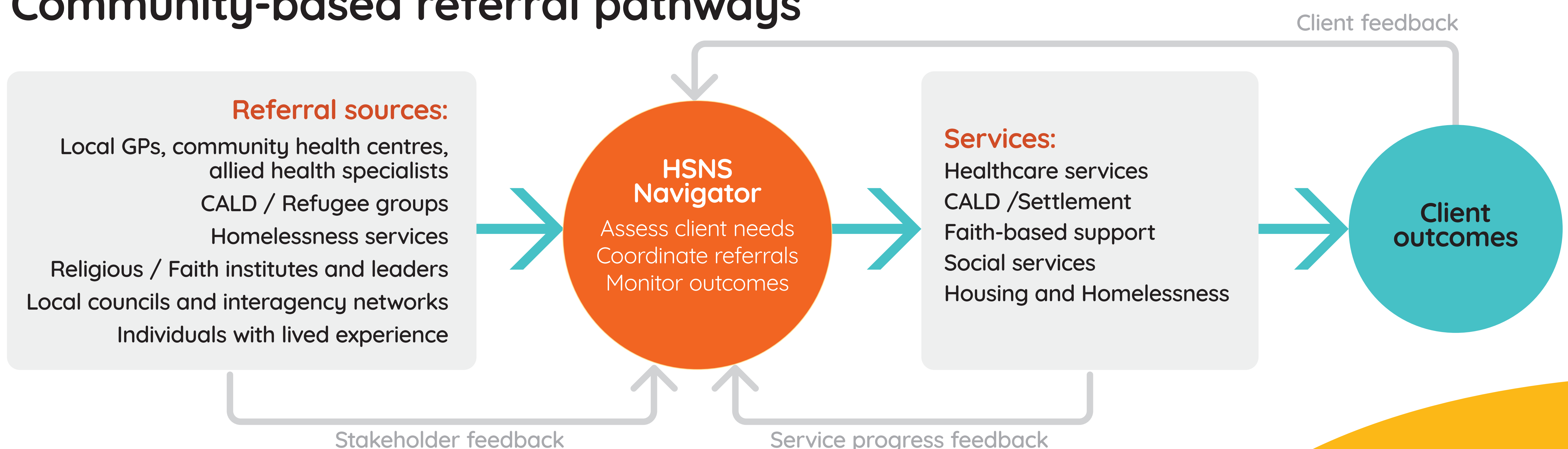
The role of the Navigator

- Conduct initial screening and five life-domain assessments
- Create care plans and risk assessments
- Be a single point of contact for clients using the service
- Navigate support and links to access healthcare and social services
- Manage care coordination

Navigator training requirements

- Qualifications in social work, community services, and relevant fields
- First Aid and CPR
- Mental Health First Aid
- Trauma-Informed Service Delivery
- Child protection procedures
- Privacy awareness
- WHS awareness
- Modern Slavery awareness

Community-based referral pathways



HSNS • Learn more



Get in touch
E: clientservices@ssi.org.au
P: 1800 298 474
ssi.org.au

SSI For equality of life.